

# ETER

## Specification Sheet



### Ordering Information

Model	Length	Power	Color Temp.	Optics	Voltage	Options
ET	174 324 624 1224	H	27 30 40	WW	24	C* C3 C6 C9



### Application

- Architectural and landscape lighting
- Recessed floor/wall installation
- Linear wall/floor wash
- Gravel, soil or concrete
- UL STD 1598, IP67, Wet location, drive over rated 1500kg (3300 lb)

### Luminaire

- Continuous run of standard lengths
- Remote power supply
- Stainless steel type 304 body
- Snap in installation with no exposed hardware
- Installation housing, stainless steel type 304 construction, direct concrete pour
- Supplied with oil and water resistant 1m (3.3') feed cable as standard (C\*)
- IK10, Clear tempered glass 10mm (3/8") thick

### Color Temperature

- 27 - 2700K
- 30 - 3000K
- 40 - 4000K
- 2 Step MacAdam
- CRI: > 85

### Optics

- WW - Wall Wash 28° tilt

### Voltage

- 24 - 24VDC fixture voltage

### Options

- C\* - standard feed cable 1m ( 3,3' )
- C3 - luminaire supplied with 3m (10') feed cable
- C6 - luminaire supplied with 6m (20') feed cable
- C9 - luminaire supplied with 9m (30') feed cable

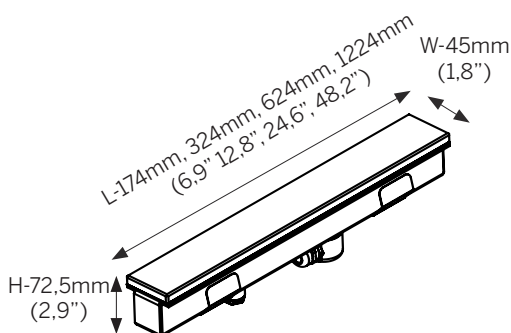
### Installation housing

- ET174 - 174mm (6,9")
- ET324 - 324mm (12,8")
- ET624 - 624mm (24,6")
- ET1224 - 1224mm (48,2")

### POWER SUPPLIES

List of proposed power supplies that are to be ordered separately. Please click [link](#) for list of available drivers.

Click [here](#) for voltage drop and distances.



### Length

- 174mm (6,9")
- 324mm (12,8")
- 624mm (24,6")
- 1224mm (48,2")

### Optimal fixture positioning

- 300mm (11,8") from wall - wall height 3m (10")
- Max. 130mm(5,1") between fixtures for continuous light effect

### Power - Delivered lumens

- H - 23W/m, 2700K - 4000K, 920 lm/m

International: +385 52 255 324 [filixlighting.com](http://filixlighting.com)

[info@filixlighting.com](mailto:info@filixlighting.com)

Europe/GmbH: [info@filixlighting.com](mailto:info@filixlighting.com)

Europe MENA: [info@filixlighting.com](mailto:info@filixlighting.com)

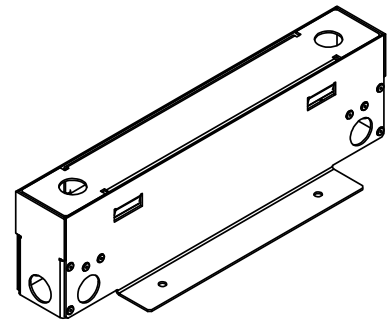
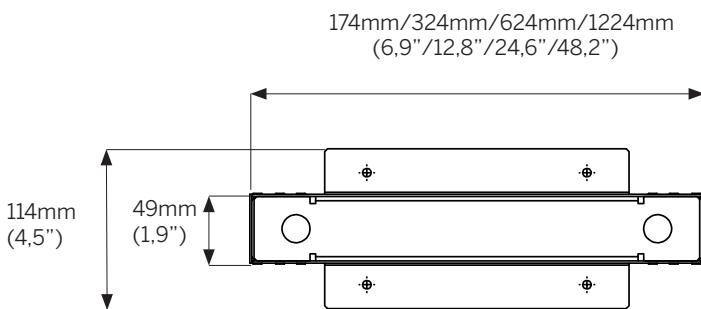
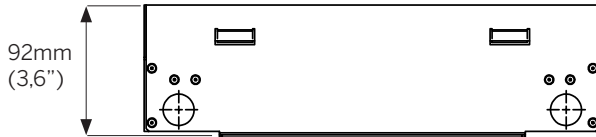
North America: [filixlighting-usa.com](mailto:filixlighting-usa.com) [info@filixlighting.com](mailto:info@filixlighting.com)

Filix reserves the right to make technical changes without notice.

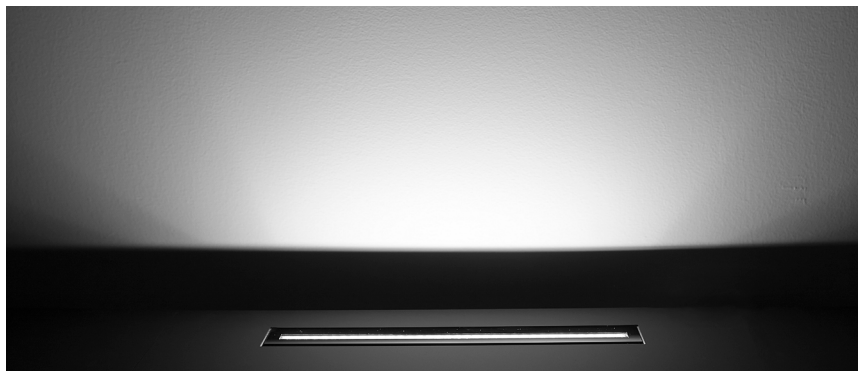
Note:  
For details on specific depths, tiling thickness and other please refer to both Installation instructions for fixture and housing.

Installation housing - ET174 / ET324 / ET624 / ET1224

Installation details



For countinious light max lenght between illuminares max. 130mm (5,1")



For 3m (10') wall illumination, please install illuminares 300mm (11,8")from the wall.

International: +385 52 255 324 [filixlighting.com](http://filixlighting.com)  
[info@filixlighting.com](mailto:info@filixlighting.com)  
 Europe/GmbH: [info@filixlighting.com](mailto:info@filixlighting.com)  
 Europe MENA: [info@filixlighting.com](mailto:info@filixlighting.com)  
 North America: [filixlighting-usa.com](http://filixlighting-usa.com) [info@filixlighting.com](mailto:info@filixlighting.com)

Filix reserves the right to make technical changes without notice.