

Zalex



An **extremely resistant** uplight, also available in the tilting version, ideally suited to withstand also **the most adverse environmental conditions**, such as humidity and high salinity.

Passive heat dissipation

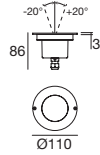
AISI 316 stainless steel casing for high salinity environments

Light management

Three optics available for optimum design flexibility



Zalex | Drive-over spotlight | powerLED 6 W 630 mA



type

Steel	CRI 80	94137
-------	--------	--------------

colour

3000 K	624 lm	W
4000 K	666 lm	N
5000 K	759 lm	C
R - G - B - Y on request		

optic

15°	15
30°	30
60°	60



99179
ON/OFF
1 - 2 art.

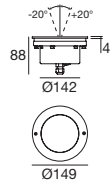
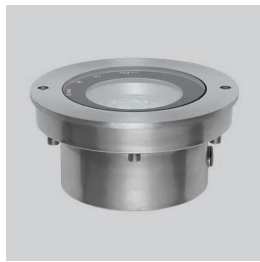


99186
ON/OFF
2 - 4 art.



98134
Outer casing

Zalex | Drive-over spotlight | powerLED 18 W 630 mA



type

Steel	CRI 80	94138
-------	--------	--------------

colour

3000 K	1872 lm	W
4000 K	1998 lm	N
5000 K	2277 lm	C
R - G - B - Y on request		

optic

15°	15
30°	30
60°	60



99186
ON/OFF
1 art.



98133
Outer casing

Zalex | Outer-casing



type	Ø mm	h. mm	suitable for
PVC	115	163	Zalex 6 W 98134

Zalex | Outer-casing



type	Ø mm	h. mm	suitable for
PVC	154	173	Zalex 18 W 98133

