

# MINO X

[xal.com/mino](http://xal.com/mino)**Rockfon**  
ACTIVATE YOUR CEILING

## Quickinfo

### GENERAL

recessed  
IP20

### LED

Mid-power LED  
up to 2730lm/m  
up to 122lm/W  
3000K, 4000K, tunable white  
CRI ≥ 80  
Binning initial ≤ 3 MacAdam

### ESTIMATED LED LIFETIME

L90 / 50.000h

### OPTICAL

direct illumination  
PMMA cover opal, microprismatic  
CSC cover jut-out

### ELECTRICAL

non DIM, DIM DALI

### PHYSICAL

aluminium  
powder-coated  
halogen-free cable

### MINO X system

recessed

[page 606](#)

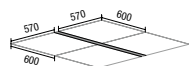


## Description

**DE** Leuchtenkörper aus Aluminiumstrangpressprofil; Oberfläche weiß pulverbeschichtet; speziell für Einsatz in Rockfon® System X Deckeneinbausystemen konzipiert; individuelle Anpassung möglich; mit Snap-In Einbaubügel für einfache und werkzeuglose Montage; Lichteinsatz bestehend aus hochreflektierend lackiertem Strangpressprofil für verbessertes Thermomanagement; HPO (High Performance Opal) Abdeckung für homogene Ausleuchtung, wahlweise deckenbündig oder 8mm hervorstehend (jut-out); mikroprismatische PMMA-Abdeckung inkl. Diffusorfolie zur Reduktion der Leuchtdichte bei homogener Ausleuchtung; energieeffiziente LEDs mit sehr guter Farbwiedergabe; Binning initial ≤ 3 MacAdam; lieferbar in den Lichtfarben 3000 K und 4000 K; CRI ≥ 80; min. 90% des Lichtstromes nach 50000h Lebensdauer; Schutzart IP20; SK I; Betriebsgerät in aufgesetztem Aluminiumgehäuse verbaut; optional nicht dimmbar

**EN** Luminaire housing made of extruded aluminium; surface white powder coated; specially developed for use in Rockfon® System X recessed ceiling systems; individual adjustment possible; with snap-in mounting brackets for easy mounting without tools; lighting insert consisting of highly reflective coated extruded profile for improved thermal management; HPO (High Performance Opal) cover for homogeneous illumination, optionally flush with ceiling or protruding by 8mm (jut-out); micro prismatic PMMA diffuser incl. diffuser film for homogeneous illumination and reduced luminance; energy-efficient LEDs with very good colour rendering; binning initial ≤ 3 MacAdam; available in the light colours 3000 K and 4000 K; CRI ≥ 80; min. 90% of the luminous flux after 50000 hours; protection class IP20; PC I; operating unit installed in attached aluminium housing; optional non-dimmable

## Features

**Rockfon**  
ACTIVATE YOUR CEILING

made for "Rockfon®  
System X"



tunable white  
3000–6000 K

### Standard configuration

COLOUR TEMPERATURE ⋮  
3000K 5

CONTROL ↕  
DIM DALI 3

MATERIAL COLOUR  
white 7



LIGHT OPTIC COVER ☐  
opal high performance H

### Extended configuration

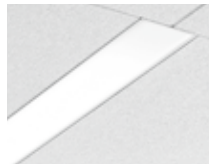
COLOUR TEMPERATURE ⋮  
4000K 6  
tunable white 3000-6000K

CONTROL ↕  
non DIM 1

LIGHT OPTIC COVER ☐  
microprismatic Z  
jut-out J

### Options on request

COLOUR RENDERING INDEX  
CRI ≥ 90



### MINO X



SYS. POWER	COLOUR TEMP.	LUM. FLUX	L (mm)	ORDER CODE
13 W	3000K 4000K	1480lm 1570lm	600	0 5 9 - 4 0 3 2 <span style="color: blue;">⋮</span> 7 <span style="color: blue;">☐</span>
26 W	3000K 4000K	2960lm 3140lm	1200	0 5 9 - 4 0 3 4 <span style="color: blue;">⋮</span> 7 <span style="color: blue;">☐</span>
39 W	3000K 4000K	4430lm 4710lm	1800	0 5 9 - 4 0 3 6 <span style="color: blue;">⋮</span> 7 <span style="color: blue;">☐</span>
51 W	3000K 4000K	5910lm 6280lm	2400	0 5 9 - 4 0 3 8 <span style="color: blue;">⋮</span> 7 <span style="color: blue;">☐</span>
64 W	3000K 4000K	7390lm 7850lm	3000	0 5 9 - 4 0 3 9 <span style="color: blue;">⋮</span> 7 <span style="color: blue;">☐</span>

luminous flux opal high performance

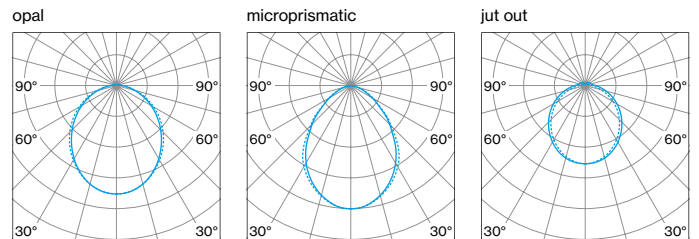
### MINO X tunable white 3000-6000K



SYS. POWER	COLOUR TEMP.	LUM. FLUX	L (mm)	ORDER CODE
27 W	3000-6000K	3260lm	1200	0 5 9 - 4 0 3 4 0 3 7 <span style="color: blue;">☐</span>
40 W	3000-6000K	4890lm	1800	0 5 9 - 4 0 3 6 0 3 7 <span style="color: blue;">☐</span>
54 W	3000-6000K	6530lm	2400	0 5 9 - 4 0 3 8 0 3 7 <span style="color: blue;">☐</span>

luminous flux opal high performance

### LIGHT DISTRIBUTION



## Inspiration

DTU Space, National Space Institute  
Denmark

**PRODUCT**  
MINO X  
MINO X system

**ARCHITECT**  
Erik Møller Architects A/S  
Copenhagen, Denmark

**LIGHTING DESIGN**  
anker & co  
Copenhagen, Denmark

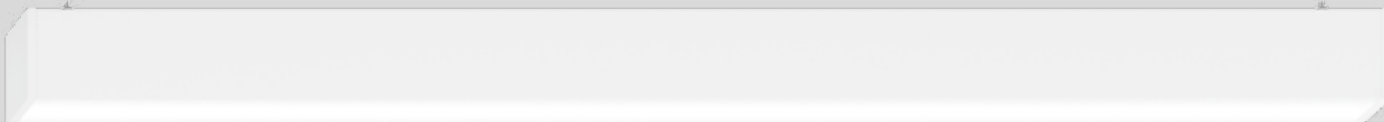




# MINO 60

## suspended

[xal.com/mino](http://xal.com/mino)



### Quickinfo

#### GENERAL

suspended  
IP 20

#### LED

Mid-power LED  
up to 3562lm/m  
up to 115lm/W  
3000 K, 4000 K  
CRI ≥ 80  
Binning initial ≤ 3 MacAdam

#### ESTIMATED LED LIFETIME

L90 / 50000 h

#### OPTICAL

direct illumination  
PMMA cover opal  
microprismatic (UGR < 19)

#### ELECTRICAL

non DIM, DIM DALI  
transparent feeder cable

#### PHYSICAL

aluminium  
powder-coated  
halogen-free cable (internal wiring)

**MINO 60** system  
suspended  
[page 506](#)

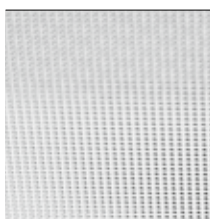


### Description

**DE** Leuchtenkörper aus Aluminiumstrangpressprofil, kantige Ausführung; keine sichtbaren Schrauben; Oberfläche weiß, grau, dunkelgrau, schwarz, beige oder dunkelbraun pulverbeschichtet; Leuchtenprofil für Montage vorab lieferbar; restliche Leuchtenkomponenten werkzeuglos montierbar; Lichteinsatz bestehend aus hochreflektierend lackiertem Strangpressprofil für verbessertes Thermomanagement; Pendelleuchte mit 1500 mm Seilabhängung; werkzeuglose Höhenverstellung an der Leuchte; Befestigung an der Leuchte mittels Federclips; frei positionierbar; inkl. transparenter Einspeiseleitung; HPO (High Performance Opal) Abdeckung für homogene Ausleuchtung; mit erhöhter Transmission und Diffusion; mikroprismatische PMMA-Abdeckung inkl. Diffusorfolie zur Reduktion der Leuchtdichte bei homogener Ausleuchtung; bildschirmtaugliche Arbeitsplatzleuchte nach DIN EN 12464-1 (UGR < 19) bei Powerswitch-Einstellung "e"; energieeffiziente LEDs mit sehr guter Farbwiedergabe; Powerswitch (e, e<sup>2</sup>, e<sup>2+</sup>) bei schaltbarer Ausführung, am Lichteinsatz einstellbar; Binning initial ≤ 3 MacAdam; lieferbar in den Lichtfarben 3000 K und 4000 K; CRI ≥ 80; min. 90 % des Lichtstromes nach 50000 h Lebensdauer; Schutzart IP 20; SK I; wahlweise nicht dimmbar oder DALI-dimmbar

**EN** Luminaire housing from extruded aluminium profile, angular design; no visible screws; surface powder coated in white, grey, dark grey, black, beige or dark brown; luminaire profile for mounting available in advance; remaining luminaire components mounted without tools; lighting insert consisting of highly reflective coated extruded profile for improved thermal management; Suspended luminaire with 1500 mm cable suspension; height adjustment without tools on the luminaire; spring clip attachment to the luminaire; freely positionable; incl. transparent feed; HPO (High Performance Opal) cover for uniform illumination; with increased transmission and diffusion; micro prismatic PMMA diffuser incl. diffuser film for homogeneous illumination and reduced luminance; screen work capable luminaire as per DIN EN 12464-1 (UGR < 19) with powerswitch setting "e"; energy-efficient LEDs with very good colour rendering; powerswitch (e, e<sup>2</sup>, e<sup>2+</sup>) with switchable versions, adjustable on the insert; binning initial ≤ 3 MacAdam; available in the light colours 3000K and 4000K; CRI ≥ 80; min. 90 % of the luminous flux after 50000 hours; protection class IP 20; PC I; optionally non-dimmable or DALI dimmable

### Features



microprismatic  
(UGR < 19)



power switch



tunable white 3000–  
6000 K on request

### Standard configuration

**COLOUR TEMPERATURE** ⋮  
3000K 5

**CONTROL** ▾  
non DIM (switchable e/e<sup>2</sup>/e<sup>2+</sup>) 1  
DIM DALI (only e<sup>2</sup>) 3

**MATERIAL COLOUR** ▣  
white 7

7

**LIGHT OPTIC COVER** ▣  
opal high performance H

### Extended configuration

**COLOUR TEMPERATURE** ⋮  
4000K 6

**MATERIAL COLOUR** ▣  
beige K  
grey G  
dark grey D  
dark brown N  
black 8

K G D N 8

+5% surcharges

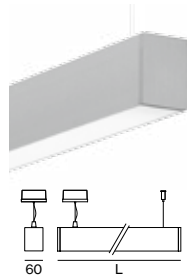
**LIGHT OPTIC COVER** ▣  
microprismatic Z  
microprismatic (UGR < 19)\* G

\*UGR < 19 only with e LED

### Options on request

**COLOUR RENDERING INDEX**  
CRI ≥ 90

**COLOUR TEMPERATURE**  
tunable white 3000–6000K (2 DALI)



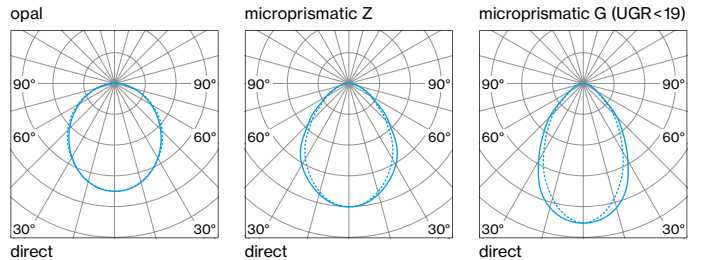
### MINO 60 suspended



SYS. POWER	COLOUR TEMP.	LUM. FLUX	L (mm)	ORDER CODE
13W e	3000K 4000K	1290 lm 1470 lm	880	0 4 6 - 4 2 P 3 <span style="color: blue;">⋮</span> <span style="color: blue;">▾</span> <span style="color: blue;">▣</span>
22W e <sup>2</sup>	3000K 4000K	2210 lm 2350 lm		
31W e <sup>2+</sup>	3000K 4000K	2880 lm 3060 lm		
17W e	3000K 4000K	1720 lm 1950 lm	1180	0 4 6 - 4 2 P 4 <span style="color: blue;">⋮</span> <span style="color: blue;">▾</span> <span style="color: blue;">▣</span>
29W e <sup>2</sup>	3000K 4000K	2950 lm 3130 lm		
41W e <sup>2+</sup>	3000K 4000K	3830 lm 4070 lm		
21W e	3000K 4000K	2150 lm 2440 lm	1480	0 4 6 - 4 2 P 5 <span style="color: blue;">⋮</span> <span style="color: blue;">▾</span> <span style="color: blue;">▣</span>
37W e <sup>2</sup>	3000K 4000K	3680 lm 3910 lm		
52W e <sup>2+</sup>	3000K 4000K	4790 lm 5090 lm		
34W e	3000K 4000K	3430 lm 3910 lm	2352	0 4 6 - 4 2 P 8 <span style="color: blue;">⋮</span> <span style="color: blue;">▾</span> <span style="color: blue;">▣</span>
59W e <sup>2</sup>	3000K 4000K	5890 lm 6260 lm		
82W e <sup>2+</sup>	3000K 4000K	7670 lm 8150 lm		

luminous flux opal high performance, -13% by microprismatic Z cover,  
-15% by microprismatic G (UGR < 19) cover

### LIGHT DISTRIBUTION





## Inspiration

Office Los Campos  
Gijón, Spain

**ARCHITECT**  
Ballina y Canal Arquitectos  
Gijón, Spain

**LIGHTING DESIGN**  
Lux Gijón  
Gijón, Spain

**PRODUCT**  
MINO 60 suspended



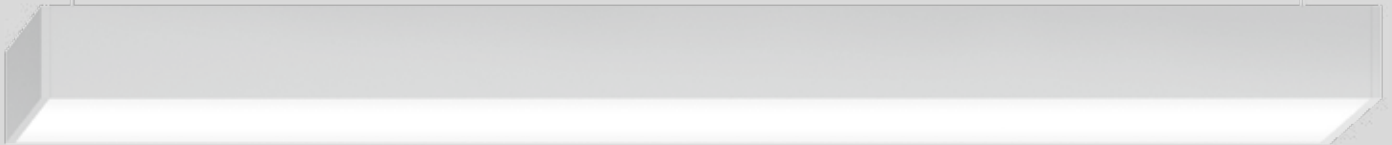




# MINO 100

## suspended

[xal.com/mino](http://xal.com/mino)



### Quickinfo

#### GENERAL

suspended  
IP 20

#### LED

Mid-power LED  
up to 3990 lm/m  
up to 129 lm/W  
3000 K, 4000 K  
CRI ≥ 80  
Binning initial ≤ 3 MacAdam

#### ESTIMATED LED LIFETIME

L90 / 50000 h

#### OPTICAL

direct illumination  
PMMA cover opal  
microprismatic (UGR < 19)

#### ELECTRICAL

non DIM, DIM DALI  
transparent feeder cable

#### PHYSICAL

aluminium  
powder-coated  
halogen-free cable (internal wiring)

#### MINO 100

system  
suspended  
[page 536](#)

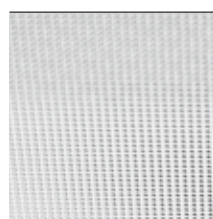


### Description

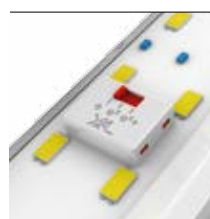
**DE** Leuchtenkörper aus Aluminiumstrangpressprofil, kantige Ausführung; keine sichtbaren Schrauben; Oberfläche weiß, grau, dunkelgrau, schwarz, beige oder dunkelbraun pulverbeschichtet; Leuchtenprofil für Montage vorab lieferbar; restliche Leuchtenkomponenten werkzeuglos montierbar; Lichteinsatz bestehend aus hochreflektierend lackiertem Strangpressprofil für verbessertes Thermomanagement; Pendelleuchte mit 1500 mm Seilabhängung; werkzeuglose Höhenverstellung an der Leuchte; Befestigung an der Leuchte mittels Federclips; frei positionierbar; inkl. transparenter Einspeiseleitung; HPO (High Performance Opal) Abdeckung für homogene Ausleuchtung; mit erhöhter Transmission und Diffusion; mikroprismatische PMMA-Abdeckung inkl. Diffusorfolie zur Reduktion der Leuchtdichte bei homogener Ausleuchtung; bildschirmtaugliche Arbeitsplatzleuchte nach DIN EN 12464-1 (UGR < 19) bei Powerswitch-Einstellung "e"; energieeffiziente LEDs mit sehr guter Farbwiedergabe; Powerswitch (e, e<sup>2</sup>, e<sup>2+</sup>) bei schaltbarer Ausführung, am Lichteinsatz einstellbar; Binning initial ≤ 3 MacAdam; lieferbar in den Lichtfarben 3000 K und 4000 K; CRI ≥ 80; min. 90 % des Lichtstromes nach 50000 h Lebensdauer; Schutzart IP 20; SK I; wahlweise nicht dimmbar oder DALI-dimmbar

**EN** Luminaire housing from extruded aluminium profile, angular design; no visible screws; surface powder coated in white, grey, dark grey, black, beige or dark brown; luminaire profile for mounting available in advance; remaining luminaire components mounted without tools; lighting insert consisting of highly reflective coated extruded profile for improved thermal management; Suspended luminaire with 1500 mm cable suspension; height adjustment without tools on the luminaire; spring clip attachment to the luminaire; freely positionable; incl. transparent feed; HPO (High Performance Opal) cover for uniform illumination; with increased transmission and diffusion; micro prismatic PMMA diffuser incl. diffuser film for homogeneous illumination and reduced luminance; screen work capable luminaire as per DIN EN 12464-1 (UGR < 19) with powerswitch setting "e"; energy-efficient LEDs with very good colour rendering; powerswitch (e, e<sup>2</sup>, e<sup>2+</sup>) with switchable versions, adjustable on the insert; binning initial ≤ 3 MacAdam; available in the light colours 3000 K and 4000 K; CRI ≥ 80; min. 90 % of the luminous flux after 50000 hours; protection class IP 20; PC I; optionally non-dimmable or DALI dimmable

### Features



microprismatic  
(UGR < 19)



power switch



tunable white 3000–  
6000 K on request

### Standard configuration

**COLOUR TEMPERATURE** ☐☐  
3000K 5

**CONTROL** ▾▾  
non DIM (switchable e/e<sup>2</sup>/e<sup>2+</sup>) 1  
DIM DALI (only e<sup>2</sup>) 3

**MATERIAL COLOUR** ☑  
white 7



**LIGHT OPTIC COVER** ☑  
microprismatic Z  
microprismatic (UGR < 19)\* G

\*UGR < 19 only with e/e<sup>2</sup> LED

### Extended configuration

**COLOUR TEMPERATURE** ☐☐  
4000K 6

**MATERIAL COLOUR** ☑  
beige K  
grey G  
dark grey D  
dark brown N  
black 8



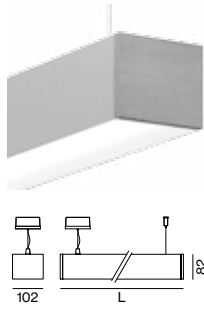
+5% surcharges

**LIGHT OPTIC COVER** ☑  
opal high performance H

### Options on request

**COLOUR RENDERING INDEX**  
CRI ≥ 90

**COLOUR TEMPERATURE**  
tunable white 3000–6000K (2 DALI)



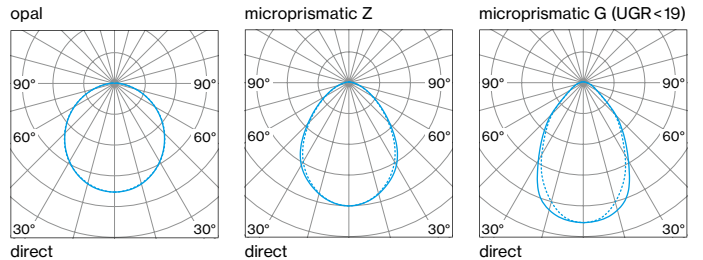
### MINO 100 suspended



SYS. POWER	COLOUR TEMP.	LUM. FLUX	L (mm)	ORDER CODE
13W e	3000K	1540 lm	896	0 5 6 - 4 2 P 3 <span style="float:right">☐☐☐☐</span>
	4000K	1640 lm		
22W e <sup>2</sup>	3000K	2470 lm		
	4000K	2630 lm		
31W e <sup>2+</sup>	3000K	3220 lm		
	4000K	3420 lm		
17W e	3000K	2060 lm	1196	0 5 6 - 4 2 P 4 <span style="float:right">☐☐☐☐</span>
	4000K	2190 lm		
29W e <sup>2</sup>	3000K	3300 lm		
	4000K	3510 lm		
41W e <sup>2+</sup>	3000K	4300 lm		
	4000K	4560 lm		
21W e	3000K	2570 lm	1496	0 5 6 - 4 2 P 5 <span style="float:right">☐☐☐☐</span>
	4000K	2730 lm		
37W e <sup>2</sup>	3000K	4120 lm		
	4000K	4380 lm		
52W e <sup>2+</sup>	3000K	5370 lm		
	4000K	5700 lm		
34W e	3000K	4120 lm	2368	0 5 6 - 4 2 P 8 <span style="float:right">☐☐☐☐</span>
	4000K	4380 lm		
59W e <sup>2</sup>	3000K	6600 lm		
	4000K	7010 lm		
82W e <sup>2+</sup>	3000K	8590 lm		
	4000K	9130 lm		

luminous flux opal high performance, -8% by microprismatic Z cover,  
-10% by microprismatic G (UGR < 19) cover

### LIGHT DISTRIBUTION



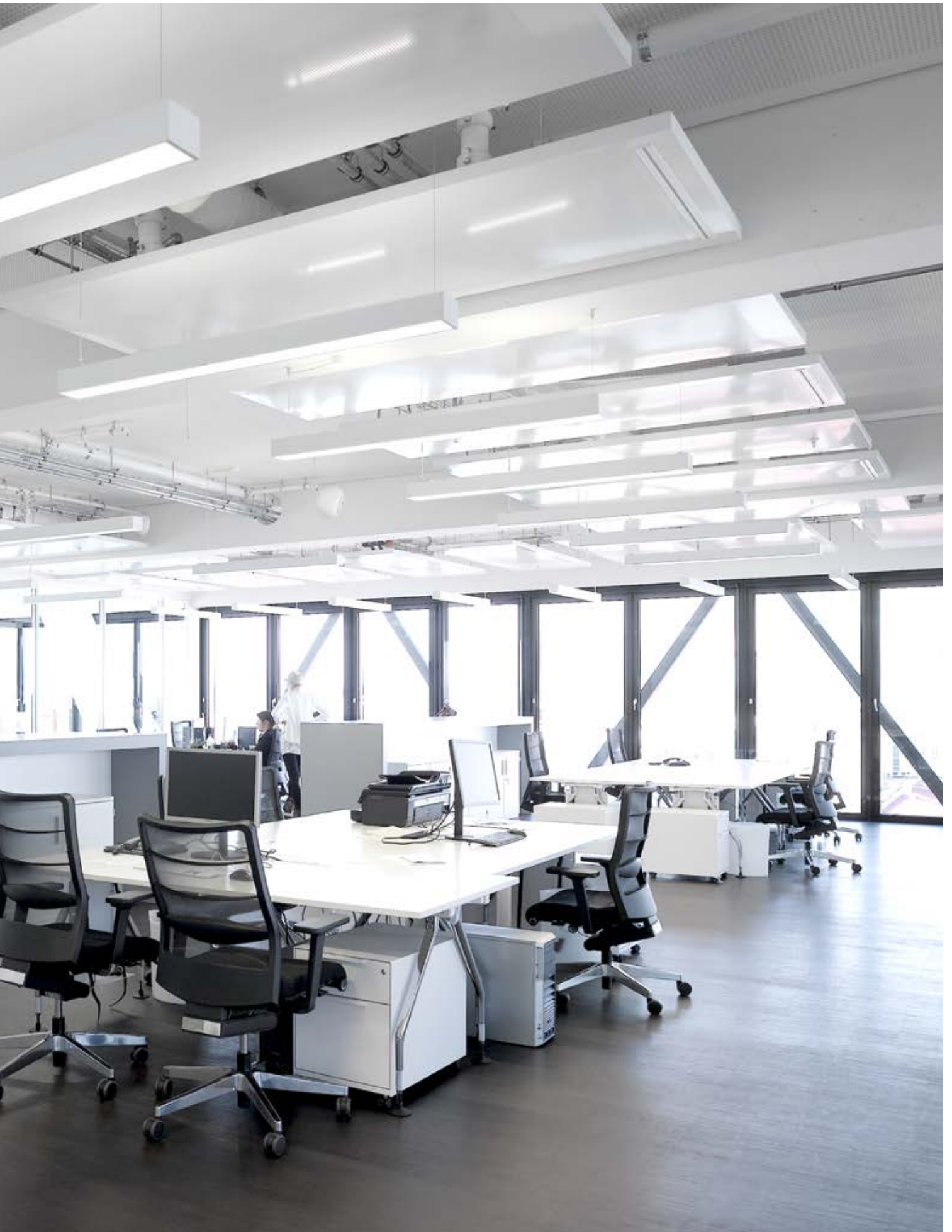
## Inspiration

Medienbrücke  
Munich, Germany

**ARCHITECT**  
steidle architekten  
Munich, Germany

**PRODUCT**  
MINO 100 suspended

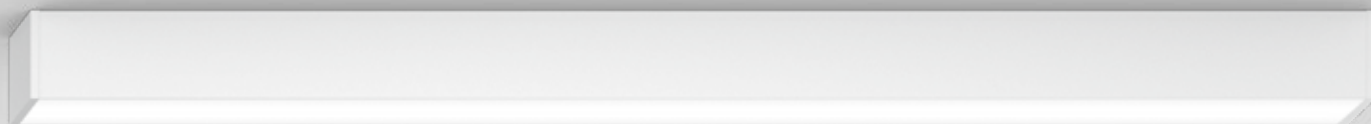




# MINO 60

## surface

[xal.com/mino](http://xal.com/mino)



### Quickinfo

#### GENERAL

surface mounted  
IP20

#### LED

Mid-power LED  
up to 3562lm/m  
up to 115lm/W  
3000 K, 4000 K  
CRI ≥ 80  
Binning initial ≤ 3 MacAdam

#### ESTIMATED LED LIFETIME

L90 / 50000 h

#### OPTICAL

direct illumination  
PMMA cover opal  
microprismatic (UGR < 19)

#### ELECTRICAL

non DIM, DIM DALI

#### PHYSICAL

aluminium  
powder-coated  
halogen-free cable

### Description

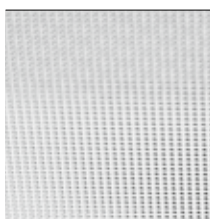
**DE** Leuchtenkörper aus Aluminiumstrangpressprofil, kantige Ausführung; keine sichtbaren Schrauben; Oberfläche weiß, grau, dunkelgrau, schwarz, beige oder dunkelbraun pulverbeschichtet; Leuchtenprofil für Montage vorab lieferbar; restliche Leuchtenkomponenten werkzeuglos montierbar; Lichteinsatz bestehend aus hochreflektierend lackiertem Strangpressprofil für verbessertes Thermomanagement; HPO (High Performance Opal) Abdeckung für homogene Ausleuchtung; mit erhöhter Transmission und Diffusion; mikroprismatische PMMA-Abdeckung inkl. Diffusorfolie zur Reduktion der Leuchtdichte bei homogener Ausleuchtung; bildschirmtaugliche Arbeitsplatzleuchte nach DIN EN 12464-1 (UGR < 19) bei Powerswitch-Einstellung "e"; energieeffiziente LEDs mit sehr guter Farbwiedergabe; Powerswitch (e, e<sup>2</sup>, e<sup>2+</sup>) bei schaltbarer Ausführung, am Lichteinsatz einstellbar; Binning initial ≤ 3 MacAdam; lieferbar in den Lichtfarben 3000K und 4000K; CRI ≥ 80; min. 90% des Lichtstromes nach 50000h Lebensdauer; Schutzart IP20; SK I; wahlweise nicht dimmbar oder DALI-dimmbar

**EN** Luminaire housing from extruded aluminium profile, angular design; no visible screws; surface powder coated in white, grey, dark grey, black, beige or dark brown; luminaire profile for mounting available in advance; remaining luminaire components mounted without tools; lighting insert consisting of highly reflective coated extruded profile for improved thermal management; HPO (High Performance Opal) cover for uniform illumination; with increased transmission and diffusion; micro prismatic PMMA diffuser incl. diffuser film for homogeneous illumination and reduced luminance; screen work capable luminaire as per DIN EN 12464-1 (UGR < 19) with powerswitch setting "e"; energy-efficient LEDs with very good colour rendering; powerswitch (e, e<sup>2</sup>, e<sup>2+</sup>) with switchable versions, adjustable on the insert; binning initial ≤ 3 MacAdam; available in the light colours 3000 K and 4000 K; CRI ≥ 80; min. 90 % of the luminous flux after 50000 hours; protection class IP20; PC I; optionally non-dimmable or DALI dimmable

**MINO 60**  
system ceiling  
[page 506](#)



### Features



microprismatic  
(UGR < 19)



power switch



tunable white 3000–  
6000 K on request



### Standard configuration

**COLOUR TEMPERATURE** ⋮  
3000K 5

**CONTROL** ▾  
non DIM (switchable e/e<sup>2</sup>/e<sup>2+</sup>) 1  
DIM DALI (only e<sup>2</sup>) 3

**MATERIAL COLOUR** ▣  
white 7



**LIGHT OPTIC COVER** ▣  
opal high performance H

### Extended configuration

**COLOUR TEMPERATURE** ⋮  
4000K 6

**MATERIAL COLOUR** ▣  
beige K  
grey G  
dark grey D  
dark brown N  
black 8



+5% surcharges

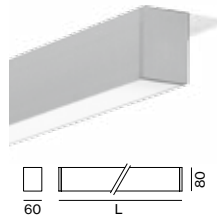
**LIGHT OPTIC COVER** ▣  
microprismatic Z  
microprismatic (UGR < 19)\* G

\*UGR < 19 only with e LED

### Options on request

**COLOUR RENDERING INDEX**  
CRI ≥ 90

**COLOUR TEMPERATURE**  
tunable white 3000–6000K (2 DALI)



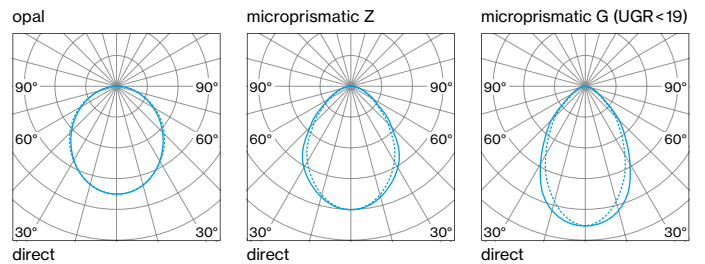
### MINO 60 surface



SYS. POWER	COLOUR TEMP.	LUM. FLUX	L (mm)	ORDER CODE
10W e	3000K	860 lm	580	0 4 6 - 4 1 P 2 <span style="color: blue;">⋮</span> <span style="color: blue;">▣</span> <span style="color: blue;">▣</span>
	4000K	980 lm		
15W e <sup>2</sup>	3000K	1470 lm	880	0 4 6 - 4 1 P 3 <span style="color: blue;">⋮</span> <span style="color: blue;">▣</span> <span style="color: blue;">▣</span>
	4000K	1560 lm		
21W e <sup>2+</sup>	3000K	1920 lm	1180	0 4 6 - 4 1 P 4 <span style="color: blue;">⋮</span> <span style="color: blue;">▣</span> <span style="color: blue;">▣</span>
	4000K	2040 lm		
13W e	3000K	1290 lm	1480	0 4 6 - 4 1 P 5 <span style="color: blue;">⋮</span> <span style="color: blue;">▣</span> <span style="color: blue;">▣</span>
	4000K	1470 lm		
22W e <sup>2</sup>	3000K	2210 lm	2352	0 4 6 - 4 1 P 8 <span style="color: blue;">⋮</span> <span style="color: blue;">▣</span> <span style="color: blue;">▣</span>
	4000K	2350 lm		
31W e <sup>2+</sup>	3000K	2880 lm		
	4000K	3060 lm		
17W e	3000K	1720 lm		
	4000K	1950 lm		
29W e <sup>2</sup>	3000K	2950 lm		
	4000K	3130 lm		
41W e <sup>2+</sup>	3000K	3830 lm		
	4000K	4070 lm		
21W e	3000K	2150 lm		
	4000K	2440 lm		
37W e <sup>2</sup>	3000K	3680 lm		
	4000K	3910 lm		
52W e <sup>2+</sup>	3000K	4790 lm		
	4000K	5090 lm		
34W e	3000K	3430 lm		
	4000K	3910 lm		
59W e <sup>2</sup>	3000K	5890 lm		
	4000K	6260 lm		
82W e <sup>2+</sup>	3000K	7670 lm		
	4000K	8150 lm		

luminous flux opal high performance, -13% by microprismatic Z cover,  
-15% by microprismatic G (UGR < 19) cover

### LIGHT DISTRIBUTION





## Inspiration

Bank of Ireland  
Dublin, Ireland

**ARCHITECT**  
Henry J Lyons Architects  
Dublin, Ireland

**LIGHTING DESIGN**  
O'Connor Sutton Cronin  
Dublin, Ireland

**PRODUCT**  
MINO 60 surface



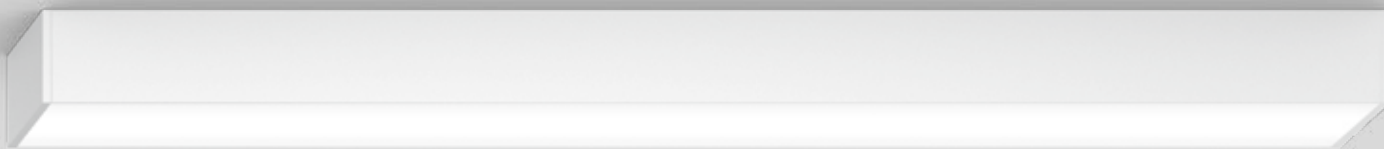




# MINO 100

## surface

[xal.com/mino](http://xal.com/mino)



### Quickinfo

#### GENERAL

surface mounted  
IP20

#### LED

Mid-power LED  
up to 3990lm/m  
up to 129lm/W  
3000K, 4000K  
CRI ≥ 80  
Binning initial ≤ 3 MacAdam

#### ESTIMATED LED LIFETIME

L90 / 50000h

#### OPTICAL

direct illumination  
PMMA cover opal  
microprismatic (UGR < 19)

#### ELECTRICAL

non DIM, DIM DALI

#### PHYSICAL

aluminium  
powder-coated  
halogen-free cable

### Description

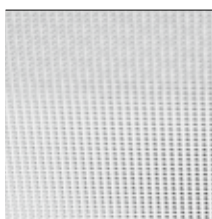
**DE** Leuchtenkörper aus Aluminiumstrangpressprofil, kantige Ausführung; keine sichtbaren Schrauben; Oberfläche weiß, grau, dunkelgrau, schwarz, beige oder dunkelbraun pulverbeschichtet; Leuchtenprofil für Montage vorab lieferbar; restliche Leuchtenkomponenten werkzeuglos montierbar; Lichteinsatz bestehend aus hochreflektierend lackiertem Strangpressprofil für verbessertes Thermomanagement; HPO (High Performance Opal) Abdeckung für homogene Ausleuchtung; mit erhöhter Transmission und Diffusion; mikroprismatische PMMA-Abdeckung inkl. Diffusorfolie zur Reduktion der Leuchtdichte bei homogener Ausleuchtung; bildschirmtaugliche Arbeitsplatzleuchte nach DIN EN 12464-1 (UGR < 19) bei Powerswitch-Einstellung "e" und "e2"; energieeffiziente LEDs mit sehr guter Farbwiedergabe; Powerswitch (e, e2, e2+) bei schaltbarer Ausführung, am Lichteinsatz einstellbar; Binning initial ≤ 3 MacAdam; lieferbar in den Lichtfarben 3000K und 4000K; CRI ≥ 80; min. 90% des Lichtstromes nach 50000h Lebensdauer; Schutzart IP20; SK I; wahlweise nicht dimmbar oder DALI-dimmbar

**EN** Luminaire housing from extruded aluminium profile, angular design; no visible screws; surface powder coated in white, grey, dark grey, black, beige or dark brown; luminaire profile for mounting available in advance; remaining luminaire components mounted without tools; lighting insert consisting of highly reflective coated extruded profile for improved thermal management; HPO (High Performance Opal) cover for uniform illumination; with increased transmission and diffusion; micro prismatic PMMA diffuser incl. diffuser film for homogeneous illumination and reduced luminance; screen work capable luminaire as per DIN EN 12464-1 (UGR < 19) with powerswitch setting "e" and "e2"; energy-efficient LEDs with very good colour rendering; powerswitch (e, e2, e2+) with switchable versions, adjustable on the insert; binning initial ≤ 3 MacAdam; available in the light colours 3000K and 4000K; CRI ≥ 80; min. 90% of the luminous flux after 50000 hours; protection class IP20; PC I; optionally non-dimmable or DALI dimmable

**MINO 100**  
system ceiling  
[page 536](#)



### Features



microprismatic  
(UGR < 19)



power switch



tunable white 3000–  
6000K on request

### Standard configuration

**COLOUR TEMPERATURE** ⦿  
3000K 5

**CONTROL** ⬆  
non DIM (switchable e/e<sup>2</sup>/e<sup>2+</sup>) 1  
DIM DALI (only e<sup>2</sup>) 3

**MATERIAL COLOUR** ☑  
white 7



**LIGHT OPTIC COVER** ☑  
microprismatic Z  
microprismatic (UGR < 19)\* G  
\*UGR < 19 only with e/e<sup>2</sup> LED

### Extended configuration

**COLOUR TEMPERATURE** ⦿  
4000K 6

**MATERIAL COLOUR** ☑  
beige K  
grey G  
dark grey D  
dark brown N  
black 8



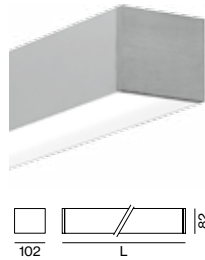
+5% surcharges

**LIGHT OPTIC COVER** ☑  
opal high performance H

### Options on request

**COLOUR RENDERING INDEX**  
CRI ≥ 90

**COLOUR TEMPERATURE**  
tunable white 3000–6000K (2 DALI)



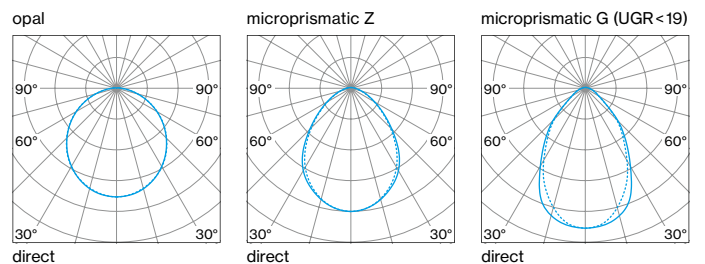
### MINO 100 surface



SYS. POWER	COLOUR TEMP.	LUM. FLUX	L (mm)	ORDER CODE
10W e	3000K 4000K	1030 lm 1090 lm	596	0 5 6 - 4 1 P 2 <span style="color: blue;">⦿</span> <span style="color: blue;">⬆</span> <span style="color: blue;">☑</span> <span style="color: blue;">☑</span>
15W e <sup>2</sup>	3000K 4000K	1650 lm 1750 lm		
21W e <sup>2+</sup>	3000K 4000K	2150 lm 2280 lm		
13W e	3000K 4000K	1540 lm 1640 lm	896	0 5 6 - 4 1 P 3 <span style="color: blue;">⦿</span> <span style="color: blue;">⬆</span> <span style="color: blue;">☑</span> <span style="color: blue;">☑</span>
22W e <sup>2</sup>	3000K 4000K	2470 lm 2630 lm		
31W e <sup>2+</sup>	3000K 4000K	3220 lm 3420 lm		
17W e	3000K 4000K	2060 lm 2190 lm	1196	0 5 6 - 4 1 P 4 <span style="color: blue;">⦿</span> <span style="color: blue;">⬆</span> <span style="color: blue;">☑</span> <span style="color: blue;">☑</span>
29W e <sup>2</sup>	3000K 4000K	3300 lm 3510 lm		
41W e <sup>2+</sup>	3000K 4000K	4300 lm 4560 lm		
21W e	3000K 4000K	2570 lm 2730 lm	1496	0 5 6 - 4 1 P 5 <span style="color: blue;">⦿</span> <span style="color: blue;">⬆</span> <span style="color: blue;">☑</span> <span style="color: blue;">☑</span>
37W e <sup>2</sup>	3000K 4000K	4120 lm 4380 lm		
52W e <sup>2+</sup>	3000K 4000K	5370 lm 5700 lm		
34W e	3000K 4000K	4120 lm 4380 lm	2368	0 5 6 - 4 1 P 8 <span style="color: blue;">⦿</span> <span style="color: blue;">⬆</span> <span style="color: blue;">☑</span> <span style="color: blue;">☑</span>
59W e <sup>2</sup>	3000K 4000K	6600 lm 7010 lm		
82W e <sup>2+</sup>	3000K 4000K	8590 lm 9130 lm		

luminous flux opal high performance, -8% by microprismatic Z cover,  
-10% by microprismatic G (UGR < 19) cover

### LIGHT DISTRIBUTION



## Inspiration

Praxis am Bahnhof  
Bremgarten, Switzerland

**PRODUCT**  
MINO 100 surface

**ARCHITECT**  
Outlog Architektur+Planung AG  
Lenzburg, Switzerland

**LIGHTING DESIGN**  
Outlog Architektur+Planung AG  
Lenzburg, Switzerland



