

FRAME 60

trim

xal.com/frame

Quickinfo

GENERAL

recessed
IP20
opt. concrete installation housing

LED

Mid-power LED
up to 3562lm/m
up to 115lm/W
3000K, 4000K
CRI ≥ 80
Binning initial ≤ 3 MacAdam

ESTIMATED LED LIFETIME

L90 / 50000h

OPTICAL

direct illumination
PMMA cover opal
microprismatic (UGR < 19)

ELECTRICAL

non DIM, DIM DALI

PHYSICAL

aluminium
powder-coated
halogen-free cable

FRAME 60

system
trim

[page 486](#)



Description

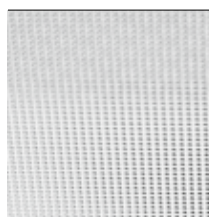
DE Leuchtenkörper aus Aluminiumstrangpressprofil; Einbauleuchte mit umlaufendem Rand; geeignet für Deckenstärken von 8-25mm; Oberfläche weiß oder grau pulverbeschichtet; Leuchtenprofil für Montage vorab lieferbar; restliche Leuchtenkomponenten werkzeuglos montierbar; Lichteinsatz bestehend aus hochreflektierend lackiertem Strangpressprofil für verbessertes Thermomanagement; HPO (High Performance Opal) Abdeckung für homogene Ausleuchtung; mikroprismatische PMMA-Abdeckung inkl. Diffusorfolie zur Reduktion der Leuchtdichte bei homogener Ausleuchtung; bildschirmtaugliche Arbeitsplatzleuchte nach DIN EN 12464-1 (UGR < 19) bei Powerswitch-Einstellung "e"; energieeffiziente LEDs mit sehr guter Farbwiedergabe; Powerswitch (e, e², e²⁺) bei schaltbarer Ausführung, am Lichteinsatz einstellbar; Binning initial ≤ 3 MacAdam; lieferbar in den Lichtfarben 3000K und 4000K; CRI ≥ 80; min. 90% des Lichtstromes nach 50000h Lebensdauer; Schutzart IP20; SK I; wahlweise nicht dimmbar oder DALI-dimmbar

EN Luminaire housing made of extruded aluminium; Recessed luminaire with trim; suitable for ceiling thickness of 8-25 mm; surface powder coated in white or grey; luminaire profile for mounting available in advance; remaining luminaire components mounted without tools; lighting insert consisting of highly reflective coated extruded profile for improved thermal management; HPO (High Performance Opal) cover for uniform illumination; micro prismatic PMMA diffuser incl. diffuser film for homogeneous illumination and reduced luminance; screen work capable luminaire as per DIN EN 12464-1 (UGR < 19) with powerswitch setting "e"; energy-efficient LEDs with very good colour rendering; powerswitch (e, e², e²⁺) with switchable versions, adjustable on the insert; binning initial ≤ 3 MacAdam; available in the light colours 3000K and 4000K; CRI ≥ 80; min. 90% of the luminous flux after 50000 hours; protection class IP20; PC I; optionally non-dimmable or DALI dimmable

Features



high-quality aluminium frame



microprismatic (UGR < 19)



power switch



tunable white 3000–6000K on request

Standard configuration

COLOUR TEMPERATURE ⦿
3000K 5

CONTROL ⬇
non DIM (switchable e/e²/e²⁺) 1
DIM DALI (only e²) 3

MATERIAL COLOUR ☑
white 7



LIGHT OPTIC COVER ☑
opal high performance H

Extended configuration

COLOUR TEMPERATURE ⦿
4000K 6

MATERIAL COLOUR ☑
grey G



+5% surcharges

LIGHT OPTIC COVER ☑
microprismatic Z
microprismatic (UGR < 19)* G

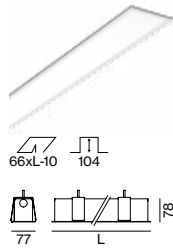
*UGR < 19 only with e LED

Options on request

COLOUR RENDERING INDEX
CRI ≥ 90

COLOUR TEMPERATURE
tunable white 3000–6000K (2 DALI)

INDIVIDUAL MATERIAL COLOUR
please contact factory



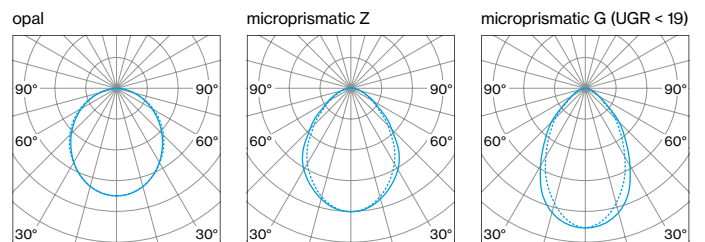
FRAME 60 trim



SYS. POWER	COLOUR TEMP.	LUM. FLUX	L (mm)	ORDER CODE
10W e	3000K	860 lm	593	0 5 2 - 4 7 P 2 ⦿ ☑ ☑
	4000K	980 lm		
15W e ²	3000K	1470 lm	893	0 5 2 - 4 7 P 3 ⦿ ☑ ☑
	4000K	1560 lm		
21W e ²⁺	3000K	1920 lm	1193	0 5 2 - 4 7 P 4 ⦿ ☑ ☑
	4000K	2040 lm		
13W e	3000K	1290 lm	1493	0 5 2 - 4 7 P 5 ⦿ ☑ ☑
	4000K	1470 lm		
22W e ²	3000K	2210 lm	2365	0 5 2 - 4 7 P 8 ⦿ ☑ ☑
	4000K	2350 lm		
31W e ²⁺	3000K	2880 lm	2365	0 5 2 - 4 7 P 8 ⦿ ☑ ☑
	4000K	3060 lm		
17W e	3000K	1720 lm	2365	0 5 2 - 4 7 P 8 ⦿ ☑ ☑
	4000K	1950 lm		
29W e ²	3000K	2950 lm	2365	0 5 2 - 4 7 P 8 ⦿ ☑ ☑
	4000K	3130 lm		
41W e ²⁺	3000K	3830 lm	2365	0 5 2 - 4 7 P 8 ⦿ ☑ ☑
	4000K	4070 lm		
21W e	3000K	2150 lm	2365	0 5 2 - 4 7 P 8 ⦿ ☑ ☑
	4000K	2440 lm		
37W e ²	3000K	3680 lm	2365	0 5 2 - 4 7 P 8 ⦿ ☑ ☑
	4000K	3910 lm		
52W e ²⁺	3000K	4790 lm	2365	0 5 2 - 4 7 P 8 ⦿ ☑ ☑
	4000K	5090 lm		
34W e	3000K	3430 lm	2365	0 5 2 - 4 7 P 8 ⦿ ☑ ☑
	4000K	3910 lm		
59W e ²	3000K	5890 lm	2365	0 5 2 - 4 7 P 8 ⦿ ☑ ☑
	4000K	6260 lm		
82W e ²⁺	3000K	7670 lm	2365	0 5 2 - 4 7 P 8 ⦿ ☑ ☑
	4000K	8150 lm		

luminous flux opal high performance, -13% by microprismatic Z cover,
-15% by microprismatic G (UGR < 19) cover

LIGHT DISTRIBUTION



Mounting accessories

CONCRETE INSTALLATION HOUSING

L (mm)	W-H (mm)	ORDER CODE
582	75-88	0 3 5 - 0 4 0 6 6
882	75-88	0 3 5 - 0 4 0 9 6
1182	75-88	0 3 5 - 0 4 1 2 6
1482	75-88	0 3 5 - 0 4 1 5 6
2354	75-88	0 3 5 - 0 4 2 3 6

no use for wall installation (only on request)



Inspiration

F & F CUCINE
Ahmedabad, India

PRODUCT
FRAME 60 trim

ARCHITECT
SamARCH Architects
Ahmedabad, India

LIGHTING DESIGN
SamARCH Architects
Ahmedabad, India

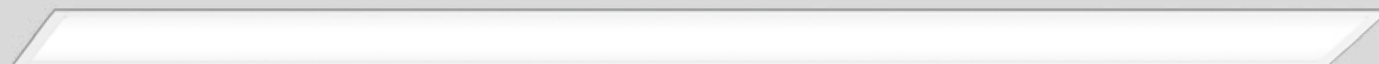




FRAME 100

trim

xal.com/frame



Quickinfo

GENERAL

recessed
IP20
opt. concrete installation housing

LED

Mid-power LED
up to 3990 lm/m
up to 129 lm/W
3000 K, 4000 K
CRI ≥ 80
Binning initial ≤ 3 MacAdam

ESTIMATED LED LIFETIME

L90 / 50000h

OPTICAL

direct illumination
PMMA cover opal
microprismatic (UGR < 19)

ELECTRICAL

non DIM, DIM DALI

PHYSICAL

aluminium
powder-coated
halogen-free cable

FRAME 100

system trim

[page 526](#)



Description

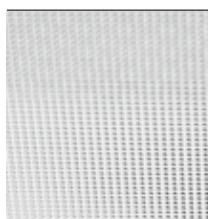
DE Leuchtenkörper aus Aluminiumstrangpressprofil; Einbauleuchte mit umlaufendem Rand; geeignet für Deckenstärken von 8-25 mm; Oberfläche weiß oder grau pulverbeschichtet; Leuchtenprofil für Montage vorab lieferbar; restliche Leuchtenkomponenten werkzeuglos montierbar; Lichteinsatz bestehend aus hochreflektierend lackiertem Strangpressprofil für verbessertes Thermomanagement; HPO (High Performance Opal) Abdeckung für homogene Ausleuchtung; mikroprismatische PMMA-Abdeckung inkl. Diffusorfolie zur Reduktion der Leuchtdichte bei homogener Ausleuchtung; bildschirmtaugliche Arbeitsplatzleuchte nach DIN EN 12464-1 (UGR < 19) bei Powerswitch-Einstellung "e" und "e2"; energieeffiziente LEDs mit sehr guter Farbwiedergabe; Powerswitch (e, e2, e2+) bei schaltbarer Ausführung, am Lichteinsatz einstellbar; Binning initial ≤ 3 MacAdam; lieferbar in den Lichtfarben 3000 K und 4000 K; CRI ≥ 80; min. 90 % des Lichtstromes nach 50000 h Lebensdauer; Schutzart IP20; SK I; wahlweise nicht dimmbar oder DALI-dimmbar

EN Luminaire housing made of extruded aluminium; Recessed luminaire with trim; suitable for ceiling thickness of 8-25 mm; surface powder coated in white or grey; luminaire profile for mounting available in advance; remaining luminaire components mounted without tools; lighting insert consisting of highly reflective coated extruded profile for improved thermal management; HPO (High Performance Opal) cover for uniform illumination; micro prismatic PMMA diffuser incl. diffuser film for homogeneous illumination and reduced luminance; screen work capable luminaire as per DIN EN 12464-1 (UGR < 19) with powerswitch setting "e" and "e2"; energy-efficient LEDs with very good colour rendering; powerswitch (e, e2, e2+) with switchable versions, adjustable on the insert; binning initial ≤ 3 MacAdam; available in the light colours 3000 K and 4000 K; CRI ≥ 80; min. 90% of the luminous flux after 50000 hours; protection class IP20; PC I; optionally non-dimmable or DALI dimmable

Features



high-quality aluminium frame



microprismatic (UGR < 19)



power switch



tunable white 3000–6000 K on request

Standard configuration

COLOUR TEMPERATURE ⦿
3000K 5

CONTROL ⬇
non DIM (switchable e/e²/e²⁺) 1
DIM DALI (only e²) 3

MATERIAL COLOUR ☑
white 7



LIGHT OPTIC COVER ☑
opal high performance H

Extended configuration

COLOUR TEMPERATURE ⦿
4000K 6

MATERIAL COLOUR ☑
grey G



+5% surcharges

LIGHT OPTIC COVER ☑
microprismatic Z
microprismatic (UGR < 19)* G

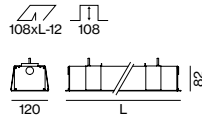
*UGR < 19 only with e/e² LED

Options on request

COLOUR RENDERING INDEX
CRI ≥ 90

COLOUR TEMPERATURE
tunable white 3000–6000K (2 DALI)

INDIVIDUAL MATERIAL COLOUR
please contact factory



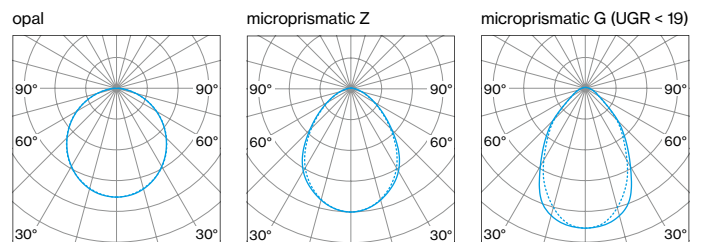
FRAME 100 trim



SYS. POWER	COLOUR TEMP.	LUM. FLUX	L (mm)	ORDER CODE
10W e	3000K	1030 lm	596	0 5 2 - 4 3 P 2 ⦿ ☑ ☑
	4000K	1090 lm		
15W e ²	3000K	1650 lm	896	0 5 2 - 4 3 P 3 ⦿ ☑ ☑
	4000K	1750 lm		
21W e ²⁺	3000K	2150 lm	1196	0 5 2 - 4 3 P 4 ⦿ ☑ ☑
	4000K	2280 lm		
13W e	3000K	1540 lm	1496	0 5 2 - 4 3 P 5 ⦿ ☑ ☑
	4000K	1640 lm		
22W e ²	3000K	2470 lm	2368	0 5 2 - 4 3 P 8 ⦿ ☑ ☑
	4000K	2630 lm		
31W e ²⁺	3000K	3220 lm	2368	0 5 2 - 4 3 P 8 ⦿ ☑ ☑
	4000K	3420 lm		
17W e	3000K	2060 lm	2368	0 5 2 - 4 3 P 8 ⦿ ☑ ☑
	4000K	2190 lm		
29W e ²	3000K	3300 lm	2368	0 5 2 - 4 3 P 8 ⦿ ☑ ☑
	4000K	3510 lm		
41W e ²⁺	3000K	4300 lm	2368	0 5 2 - 4 3 P 8 ⦿ ☑ ☑
	4000K	4560 lm		
21W e	3000K	2570 lm	2368	0 5 2 - 4 3 P 8 ⦿ ☑ ☑
	4000K	2730 lm		
37W e ²	3000K	4120 lm	2368	0 5 2 - 4 3 P 8 ⦿ ☑ ☑
	4000K	4380 lm		
52W e ²⁺	3000K	5370 lm	2368	0 5 2 - 4 3 P 8 ⦿ ☑ ☑
	4000K	5700 lm		
34W e	3000K	4120 lm	2368	0 5 2 - 4 3 P 8 ⦿ ☑ ☑
	4000K	4380 lm		
59W e ²	3000K	6600 lm	2368	0 5 2 - 4 3 P 8 ⦿ ☑ ☑
	4000K	7010 lm		
82W e ²⁺	3000K	8590 lm	2368	0 5 2 - 4 3 P 8 ⦿ ☑ ☑
	4000K	9130 lm		

luminous flux opal high performance, -8% by microprismatic Z cover,
-10% by microprismatic G (UGR < 19) cover

LIGHT DISTRIBUTION



Mounting accessories

CONCRETE INSTALLATION HOUSING

L (mm)	W-H (mm)	ORDER CODE
582	116-94	0 3 5 - 0 5 0 6 6
882	116-94	0 3 5 - 0 5 0 9 6
1182	116-94	0 3 5 - 0 5 1 2 6
1482	116-94	0 3 5 - 0 5 1 5 6
2354	116-94	0 3 5 - 0 5 2 3 6

no use for wall installation (only on request)



Inspiration

Geriatrics
Simmering, Austria

ARCHITECT
Josef Weichenberger architects + Partner
Vienna, Austria

LIGHTING DESIGN
Josef Weichenberger architects + Partner
Vienna, Austria

PRODUCT
FRAME 100 trim



