

# Vektor



Spotlight fitted with a LED array source and optics featuring Shape-it!, a light shaping system. It is extremely versatile thanks to the **dim-on-board knob** and the **focus** that can be zoomed by adjusting the front spyglass.

**Passive heat dissipation**

Extruded aluminium casing

**Light management**

Excellent colour rendering thanks to a CRI 95 LED array

**Integrated electronics**

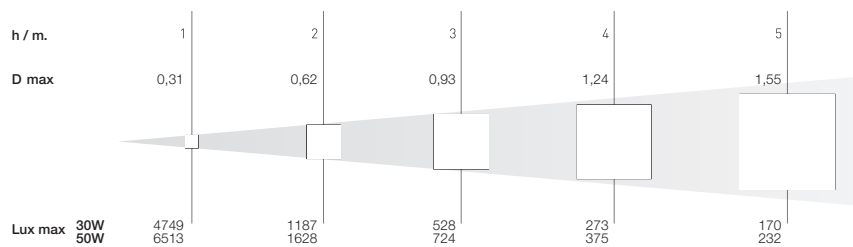
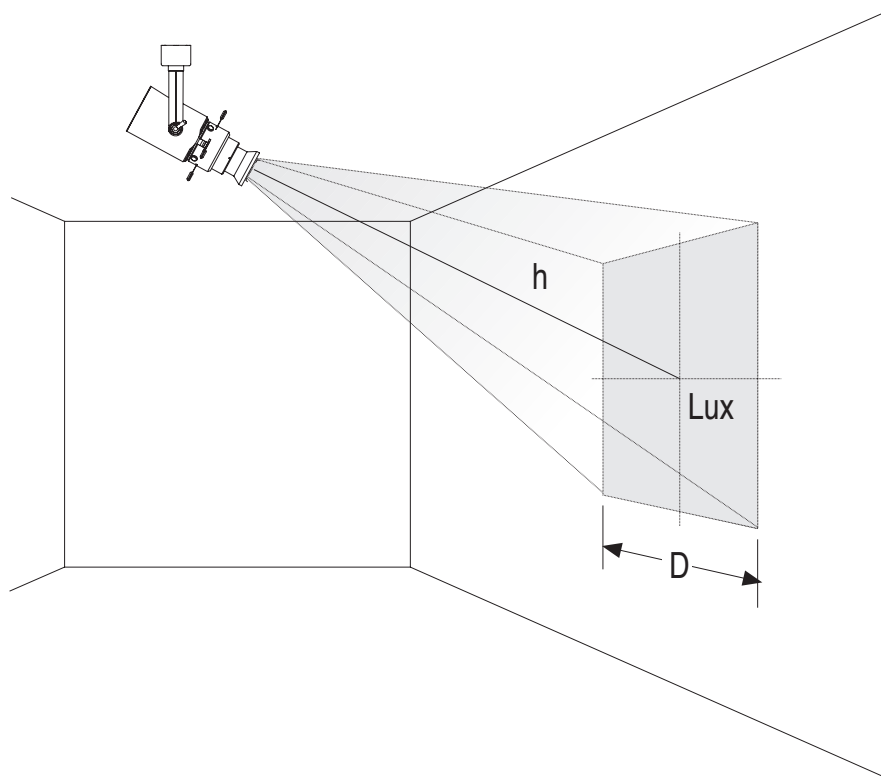
Electronics integrated in the discreet external compartment, installed parallel to the track

**Type of light control**

Version with dim-on-board knob ensuring an easy and functional light control



## Shape-it!

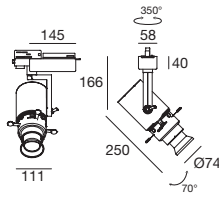


Vektor track spotlight presents **Shape-It!**: a light shaping system created by i-LèD for the retail sector.

Born out of the experience acquired in the field of museum lighting, **Shape-It!** allows for the creation of **perfectly square-shaped projections** ideal for original accent lighting squares.

The system consists of a **diaphragm with four AISI 304 steel louvers** and an **optics with manually adjustable** focus for maximum precision.

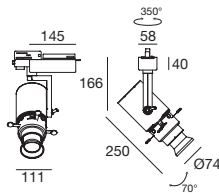
The diaphragm allows for the creation of the desired light spot with an even distribution of light on the entire surface; the adjustable focus clearly defines the edges of the light spot providing a perfect light projection.

**Vektor\_1** | Track luminaires | 180-300 V | arrayLED 30 W 840 mA**type**

White	CRI 95	<b>94449</b>
Black	CRI 95	<b>94450</b>
Grey	CRI 95	<b>94451</b>

**colour**

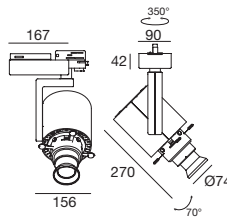
3000 K	3034 lm	<b>W</b>
4000 K	3244 lm	<b>N</b>

**optic**Shaper **66****Vektor\_1 DIMMABLE** | Track luminaires | 180-300 V | arrayLED 30 W 840 mA**type**

White	CRI 95	<b>96395</b>
Black	CRI 95	<b>96396</b>
Grey	CRI 95	<b>96397</b>

**colour**

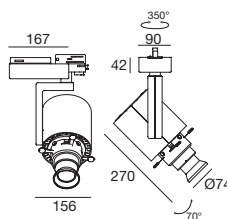
3000 K	3034 lm	<b>W</b>
4000 K	3244 lm	<b>N</b>

**optic**Shaper **66****Vektor\_2** | Track luminaires | 180-300 V | arrayLED 50 W 1300 mA**type**

White	CRI 95	<b>94452</b>
Black	CRI 95	<b>94453</b>
Grey	CRI 95	<b>94454</b>

**colour**

3000 K	4310 lm	<b>W</b>
4000 K	4611 lm	<b>N</b>

**optic**Shaper **66****Vektor\_2 DIMMABLE** | Track luminaires | 180-300 V | arrayLED 50 W 1300 mA**type**

White	CRI 95	<b>96398</b>
Black	CRI 95	<b>96399</b>
Grey	CRI 95	<b>96400</b>

**colour**

3000 K	4310 lm	<b>W</b>
4000 K	4611 lm	<b>N</b>

**optic**Shaper **66**