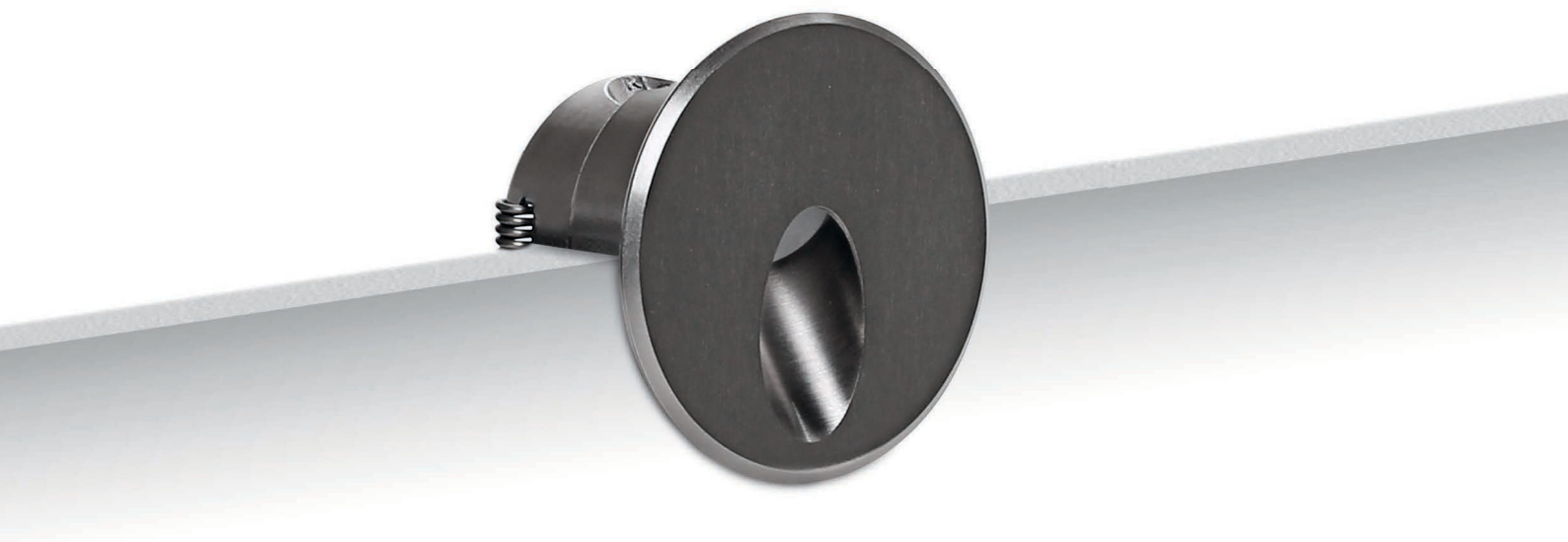


# Quara



An original path-marker recessed wall light in the shape of a **drop of light carved out of the casing**, square or round and made of aluminium. Installed **close to the ground, it casts light circles** onto the surface below while decorating it with style. The ideal solution to reveal the lines of a staircase in the dark, in an evocative yet discreet manner.

**Passive heat dissipation**

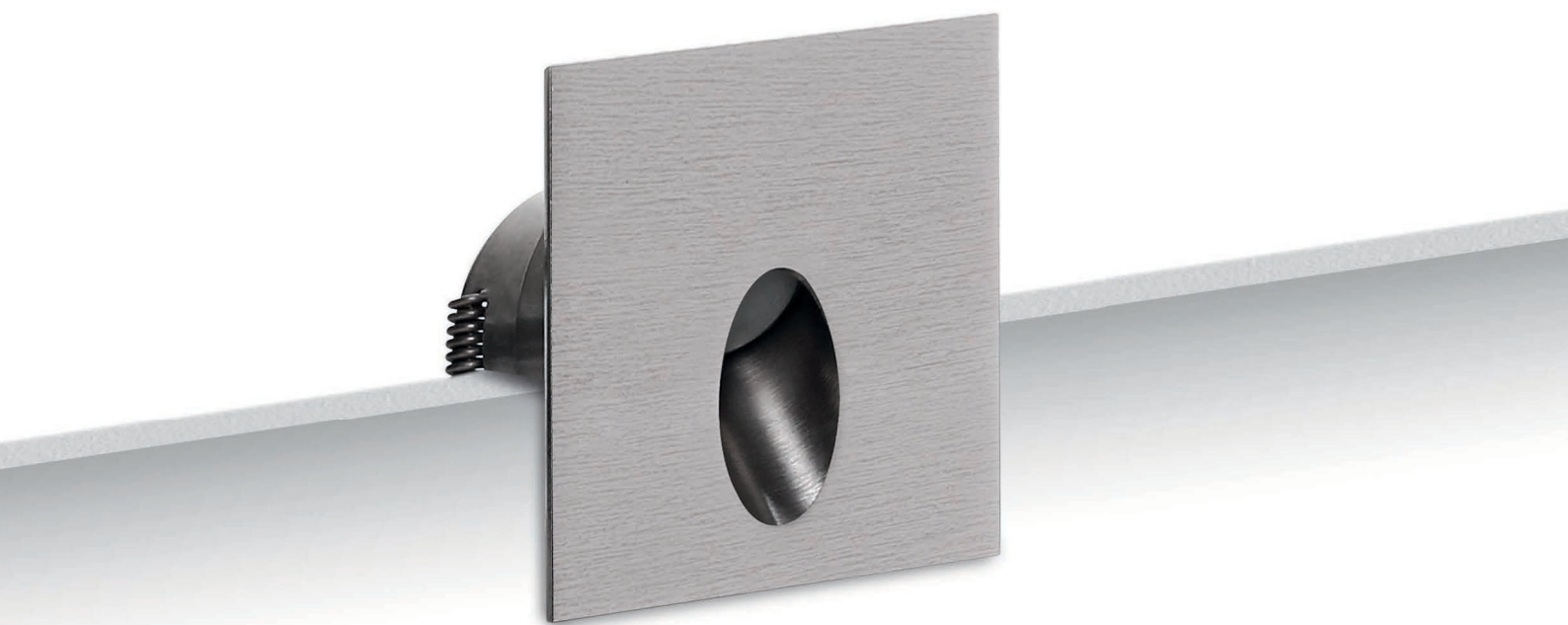
Die cast aluminium casing

**Light management**

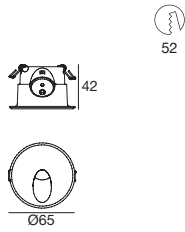
Three shades of white and four colours for customizable lighting

**Minimalist aesthetics**




The design of the square and circle is direct and universal



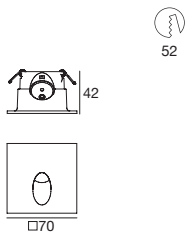
**Quara\_R** | Path-marker | powerLED 2 W 630 mA



type		colour			optic	
Nickel	CRI 80	<b>86402</b>	3000 K	208 lm	<b>W</b>	70°
			4000 K	222 lm	<b>N</b>	<b>70</b>
			5000 K	253 lm	<b>C</b>	
R - G - B - Y on request						

-   
**89147**  
 ON/OFF  
 1 - 2 art.
-   
**99115**  
 1-10V  
 1 - 10 art.
-   
**99114**  
 DALI  
 1 - 10 art.
-   
**84338**  
 Outer casing

**Quara\_Q** | Path-marker | powerLED 2 W 630 mA



type		colour			optic	
Nickel	CRI 80	<b>86564</b>	3000 K	208 lm	<b>W</b>	70°
			4000 K	222 lm	<b>N</b>	<b>70</b>
			5000 K	253 lm	<b>C</b>	
R - G - B - Y on request						

-   
**89147**  
 ON/OFF  
 1 - 2 art.
-   
**99115**  
 1-10V  
 1 - 10 art.
-   
**99114**  
 DALI  
 1 - 10 art.
-   
**84338**  
 Outer casing

