

OFFSET W

WALL LUMINAIRES
WITH FINE PRISMS



A GOOD IDEA NEEDS CLARITY WITHOUT COMPROMISES

- Typified by concise forms, lines and edges.
- Separate wall fixing element for rapid one-man mounting.
- All-round frame profile of extruded aluminium with precise joints.

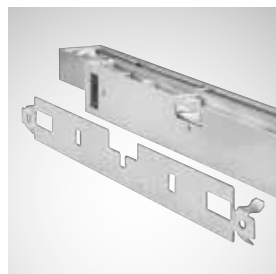


switchable and dimmable (DALI),
switchable and dimmable (1...10 V), switchable

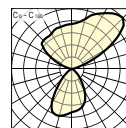
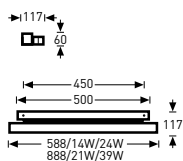
CDP fine-prisms



Simplified wall mounting



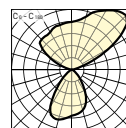
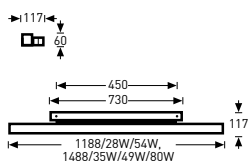
Wall luminaires with CDP fine-prism structure



Reference	TOC	...EDD	...E		EEC	≈kg
• Offset W2 CDP 114/24...	52 789...	...07	...04	1 x 14/24	A+/A/B	2.5
Offset W2 CDP 121/39...	52 790...	...07	...04	1 x 21/39	A+/A	3.0

• IK04/0.5 J 850 °C

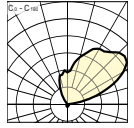
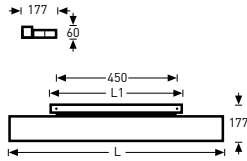
Wall luminaires with CDP fine-prism structure



Reference	TOC	...EDD	...E		EEC	≈kg
• Offset W2 CDP 128/54...	52 791...	...07	...04	1 x 28/54	A+/A/B/C	4.1
Offset W2 CDP 135/49/80...	52 792...	...07	...04	1 x 35/49/80	A+/A/B/C	5.1

• IK04/0.5 J 850 °C

Wall luminaires with RAX ceiling washer optic



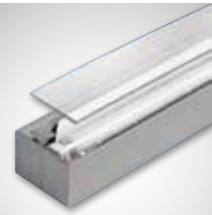
L: 888/21W/39W, 1188/28W/54W, 1488/35W/49W/80W
L1: 500/21W/39W, 730/28W/35W/49W/54W/80W



Reference	TOC	...EDD	...ED	...E		EEC	=kg
• Offset W2 RAX 121/39...	52 793...	...07	-	...04	1 x 21/39	A+/A	3.5
Offset W2 RAX 128/54...	52 794...	...07	-	...04	1 x 28/54	A+/A/B/C	4.6
Offset W2 RAX 135/49/80...	52 795...	...07	...05	...04	1 x 35/49/80	A+/A/B/C	5.6

• IK04/0.5 J 850 °C

Luminaire covers



Reference	TOC	Accessory description	=kg
Offset ZA 124 ¹⁾	45 932 00	Luminaire cover for Offset W2 CDP 114/24...	0.1
Offset ZA 135 ²⁾	45 931 00	Luminaire cover for Offset W2 CDP 135/49/80...	0.4
Offset ZA 139 ¹⁾	45 930 00	Luminaire cover for Offset W2 CDP 121/39...	0.1
Offset ZA 154 ²⁾	45 929 00	Luminaire cover for Offset W2 CDP 128/54 or S1...228/54, 2 pieces each required	0.3

¹⁾ 1 piece each required

²⁾ 2 pieces required for each, with ...W2 CDP... only 1 piece