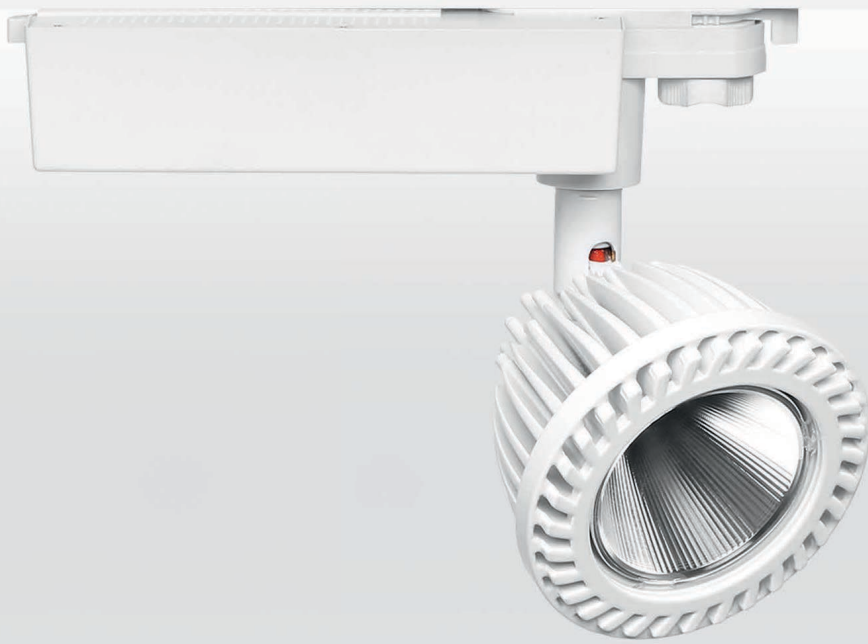


Illuminator_T



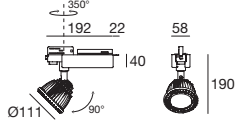
Illuminator_T is a compact spotlight that can **tilt up to 90°**.
Laica is a disc-shaped spotlight, essential and efficient, fitted with a **Safe Locking System**.

Passive heat dissipation
Aluminium casing

Light management
Different light performances are available, depending on customer's needs



Illuminator_T | Track luminaires | 180-300 V | arrayLED 25 W 720 mA

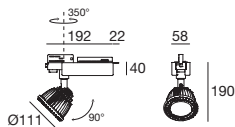


type		colour			optic	
White	CRI 95 95624	3000 K	2511 lm	W	30°	30
Black	CRI 95 95625	4000 K	2695 lm	N	60°	60
Grey	CRI 95 95626					
White	CRI 80 95941	3000 K	3321 lm	W	30°	30
Black	CRI 80 95942	4000 K	3568 lm	N	60°	60
Grey	CRI 80 95943					



98071 **98072**
30° Optic 60° Optic

Illuminator_T | Track luminaires | 180-300 V | arrayLED 35 W 950 mA

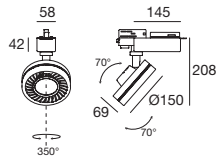


type		colour			optic	
White	CRI 95 91235	3000 K	3084 lm	W	15°	15
Black	CRI 95 91236	4000 K	3542 lm	N	30°	30
Grey	CRI 95 91237				60°	60
White	CRI 80 91238	3000 K	4323 lm	W	15°	15
Grey	CRI 80 91245	4000 K	4323 lm	N	30°	30
Black	CRI 80 91246				60°	60



98507 **98508** **98509**
15° Optic 30° Optic 60° Optic

Laica_1 | Track luminaires | 180-300 V | arrayLED 30 W 840 mA

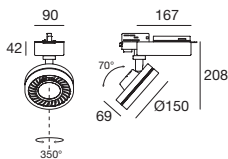


type		colour			optic	
White	CRI 95 94387	3000 K	3034 lm	W	30°	30
Black	CRI 95 94388	4000 K	3244 lm	N	60°	60
Grey	CRI 95 94389					
White	CRI 80 95481	3000 K	4014 lm	W	30°	30
Black	CRI 80 95482	4000 K	4294 lm	N	60°	60
Grey	CRI 80 95483					



98071 **98072**
30° Optic 60° Optic

Laica_2 | Track luminaires | 180-300 V | arrayLED 40 W 1100 mA



type		colour			optic	
White	CRI 95 94712	3000 K	3816 lm	W	30°	30
Black	CRI 95 94713	4000 K	4081 lm	N	60°	60
Grey	CRI 95 94714					
White	CRI 80 95484	3000 K	5041 lm	W	30°	30
Black	CRI 80 95485	4000 K	5391 lm	N	60°	60
Grey	CRI 80 95495					



98071 **98072**
30° Optic 60° Optic

