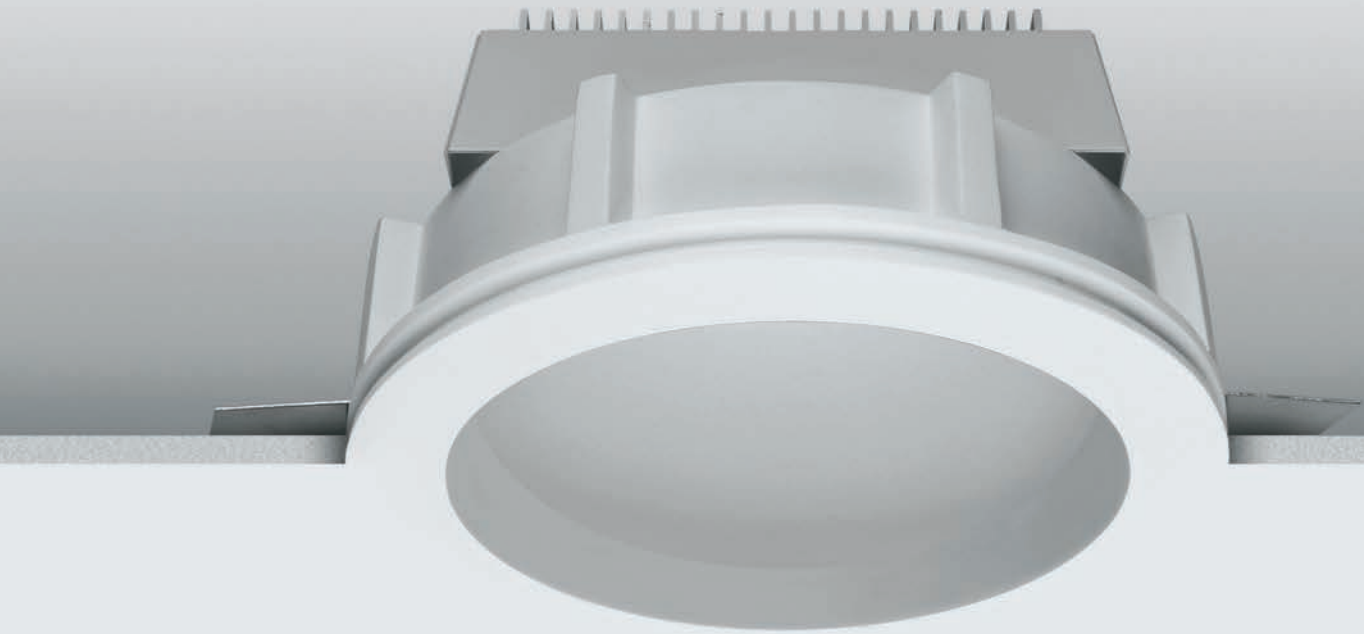

Gypsum_R

Integrated light

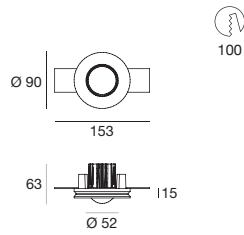
Defined by a circular essential shape, three diameters available for every designer's or lighting feeling needed. The source disappears completely, just a wide beam light emerges.

- + **integrated light**
- + **invisible frame**
- + **LED source**





Gypsum_R1 | Downlights | arrayLED 7,5 W 200 mA



type		colour			optics	
White	CRI 80	61350	3000 K	1117 lm	W	70°
			4000 K	1153 lm	N	70

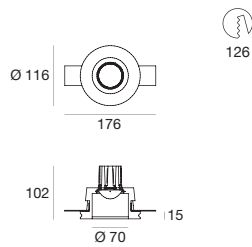
Suggested electronics

23 87 39	22 110,4 52	26 155 51
62423	62431	62432
ON/OFF 1 art.	1-10V/PUSH 1 art.	DALI/PUSH 1 art.

Suggested accessories

19 100	132 85 160
60830	61360
Shim	Outer casing

Gypsum_R2 | Downlights | arrayLED 7,5 W 200 mA



type		colour			optics	
White	CRI 80	61330	3000 K	1117 lm	W	70°
			4000 K	1153 lm	N	70

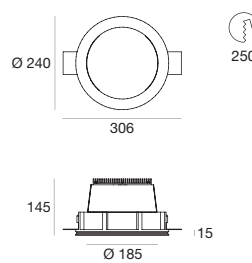
Suggested electronics

23 87 39	22 110,4 52	26 155 51
62423	62431	62432
ON/OFF 1 art.	1-10V/PUSH 1 art.	DALI/PUSH 1 art.

Suggested accessories

19 100	69 3 78
60830	60860
Shim	Glass

Gypsum_R3 | Downlights | arrayLED 18 W 500 mA



type		colour			optics	
White	CRI 80	62660	3000 K	2611 lm	W	diffused
			4000 K	2697 lm	N	00

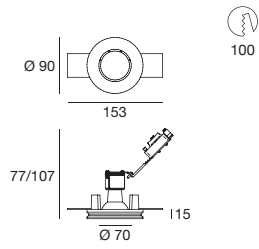
Suggested electronics

27 103 58	28 210 48	28 210 48
99106	99115	99114
ON/OFF 1 art.	1-10V/PUSH 1 art.	DALI/PUSH 1 art.

Suggested accessories

19 100
60830
Shim

Gypsum_R1 | Downlights | 1xGU10



type

White

61250

source

1xGU10 35W Max

optics

variable

Suggested accessories



60830

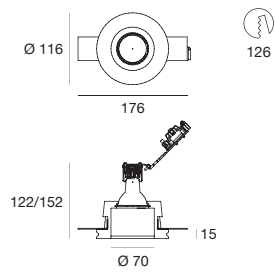
Shim



61360

Outer casing

Gypsum_R2 | Downlights | 1xGU10



type

White

61230

source

1xGU10 35W Max

optics

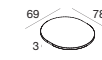
variable

Suggested accessories



60830

Shim



60860

Glass

