

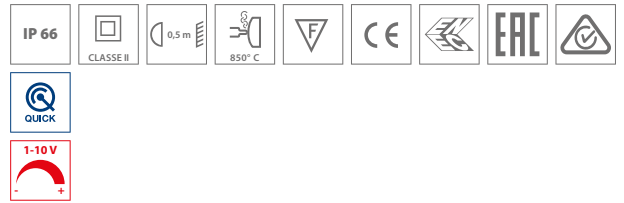
THEOS LUM

design by SILVIA PAOLA PENNACCHIO



THEOS LUM MAXI

THEOS LUM MINI



● AN-96 / Anthracite gray / Textured

Range of LED street lighting fixtures in two sizes for central suspension in the street, comprising:

- Die-cast aluminum housing chemically pre-treated and painted with polyester powder coating
- Diffuser with integrated louvre in UV, heat stabilised, transparent technopolymer
- High-transparency polycarbonate lenses for best light transmission
- Anti-ageing silicone gasket with high resiliency
- Electrical connection with outdoor rated plug & socket quick connector (IP66) that allows connection to mains without opening the luminaire. Made in PA66 with silver-plated brass contacts, for cables Ø 9 - Ø 12 mm
- Light beam obtained by the combination of multiple LED modules
- Wire mount in ultra thick galvanised sheet steel
- Stainless steel external screws
- Wire mount, whose special geometrical design is studied for easy installation and firm locking with strong metal clamps
- The luminaire is designed for dual adjustment to optimise light emission on the street: the angle adjustment allows to direction it when the wire is not perpendicular to the street, and the transversal adjustment allows to direction it when the wire is not parallel to the ground
- The "SECURE LIGHT DISTRIBUTION" system guarantees uniform light distribution even in the remote case of LED failures
- On request, versions with DALI dimming



THEOS LUM MAXI
210 W



THEOS LUM MAXI
135 W



THEOS LUM MINI
135 W

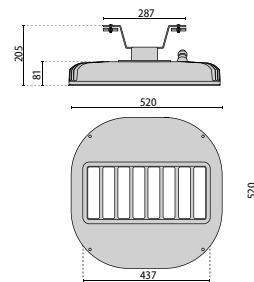


THEOS LUM MINI
70 W

THEOS LUM MAXI SR

IK10 24J xx9

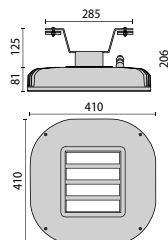
LAMPHOLDER	WATTAGE	CLASS	CRI	KELVIN	COS ϕ $\geq 0,9$	OPTIC	OPTIC BEAM	LIGHTSOURCE LUMEN OUTPUT	LUMINAIRE LUMEN OUTPUT	L	B	LIFETIME	COLOUR/ RAL	PART NUMBER
Power LED dimmable 1-10 V 220-240 V 50/60 Hz														
LED	210 W	II	•	-	4000	•	SR	-	25920 lm	21636 lm	80	10	60000 h	● 06119296
LED	135 W	II	•	-	4000	•	SR	-	17280 lm	14622 lm	80	10	60000 h	● 06119496



THEOS LUM MINI SR

IK10 24J xx9

LAMPHOLDER	WATTAGE	CLASS	CRI	KELVIN	COS ϕ $\geq 0,9$	OPTIC	OPTIC BEAM	LIGHTSOURCE LUMEN OUTPUT	LUMINAIRE LUMEN OUTPUT	L	B	LIFETIME	COLOUR/ RAL	PART NUMBER
Power LED dimmable 1-10 V 220-240 V 50/60 Hz														
LED	135 W	II	•	-	4000	•	SR	-	17280 lm	14720 lm	80	10	60000 h	● 06134496
LED	70 W	II	•	-	4000	•	SR	-	8640 lm	7475 lm	80	10	60000 h	● 06134796



OPTIONAL ACCESSORIES

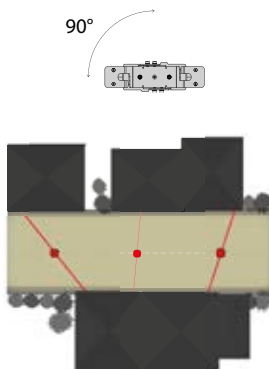
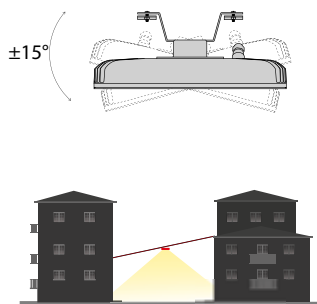
DESCRIPTION	COLOR	PART NUMBER
THEOS LUM		
Protective glass MAXI		14175120
Protective glass MINI		14460820



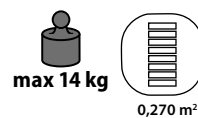
14175120



14460820



THEOS LUM MAXI



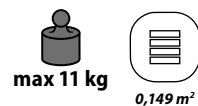
max 14 kg

0,270 m²



0,050 m²

THEOS LUM MINI

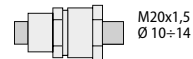


max 11 kg

0,149 m²



0,039 m²



H07RN-F 2x1,5

2x2,5 mm²

The luminaire is designed for dual adjustment to optimise light emission on the street: the angle adjustment allows to direction it when the wire is not perpendicular to the street, and the transversal adjustment allows to direction it when the wire is not parallel to the ground.